

# Geographical Assessment of Socio-economic Conditions in Laymyethna Township

Ni Ni Khaing

## Abstract

The area of Laymyethna township is 1033. 5 sqkilometer (399. 09 square miles). There are five wards, fourteen-one village tracts and 285 villages. In Laymyethna township, agriculture is the most important economy. The main crop is paddy and total cultivated area is 46564. 42 hectors (115063 acres) in 2015-2016. The cultivated crops are oil seed, pulses, paddy and other. Thus, the township's economy depends upon agriculture. Other economic activities such as fishing and timber production are of second importance. Physical conditions such as climate and soils are suitable for agriculture. The main transportation route in Laymyethna Township is road. Waterway is used for passengers and Rail road is less used.

**keywords:** physical conditions, social conditions, economic conditions

## INTRODUCTION

To study the social and economic activities, the relation between physical factors and economic activities are to be examined. Most of the populations in Laymyethna Township are rural settlers. Physical factors include location, drainage, geology, climate, natural vegetation and soils. Social factors are total population, population growth, population density and distribution. Economic factors are divided into three sectors as primary, secondary and tertiary sectors. The primary sector includes agriculture, livestock and fisheries, and forestry. The secondary sector includes manufacturing industry and the tertiary sector includes services.

### Aim and Objectives

- To know the changes of agriculture,
- To examine the changes of agricultural in Laymyethna Township, land effects of existing economic activities on local people,
- To study the changes of socio-economic conditions in the study area and
- To present agricultural activities of the area.

### Sources of Data and Methodology

To present this paper, the primary data are obtained from the field survey and informal talk. Secondary data were derived from Administrative departments of Laymyethna Township. GIS was used as a tool of Geography and Geo-statistical methods are used in this research.

### Research Problem

The study area is located in Ayeyarwady Deltaic Area, agriculture is the major economy. This research is focus on how do changes in area of agricultural land affect the socio-economic conditions of Laymyethna Township.

**Location, Size, Shape and Boundary**

There are 6 townships in the Hinthada District. Among them, Laymyethna Township is located southwest of Hinthada. It consists of 41 village tracts and 5 quarters and located between north latitudes 17° 25' and 17° 47', east longitudes 94° 48' and 95° 16'. Total area of Laymyethna Township is 1033. 5 sq. km (or) 399. 04 square miles. It has a rectangle shape. Its north-south extent is about 22 miles long and east-west about 23miles. The forest area is 452. 3 sq. km or 174. 64 square miles. Laymyethna Township is bounded by 5 townships, Ingapu Township on the north, Hinthada Township on the east, Kyonpyaw Township on the southeast, Yekyi Township on the south and Gwa Township (Rakhine State) on the west.

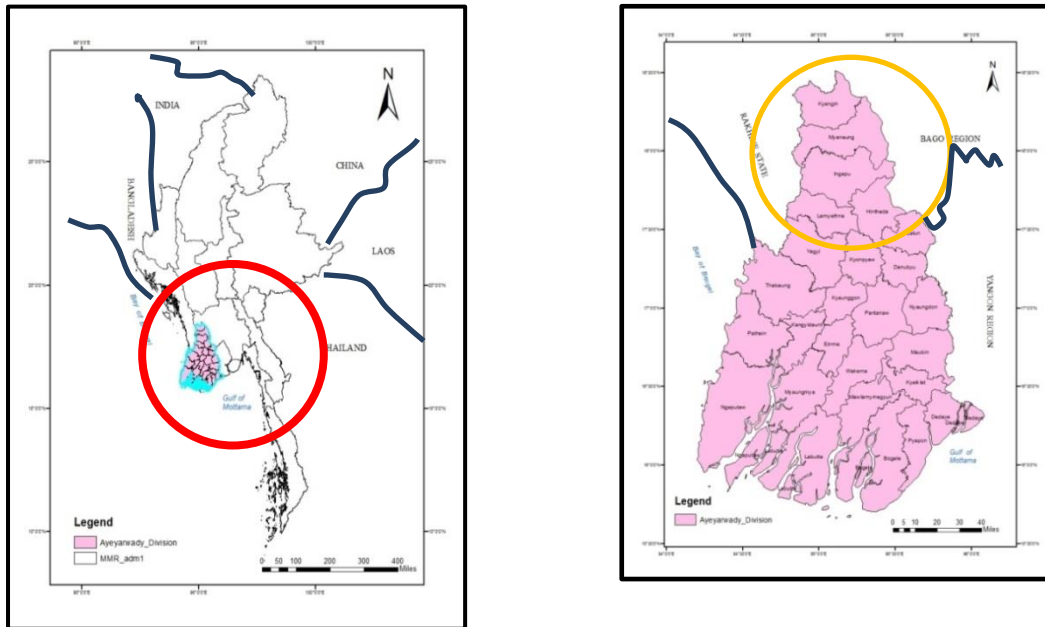


Figure (1). Location of Hinthada District. (Sources: Land Survey Department of Yangon)

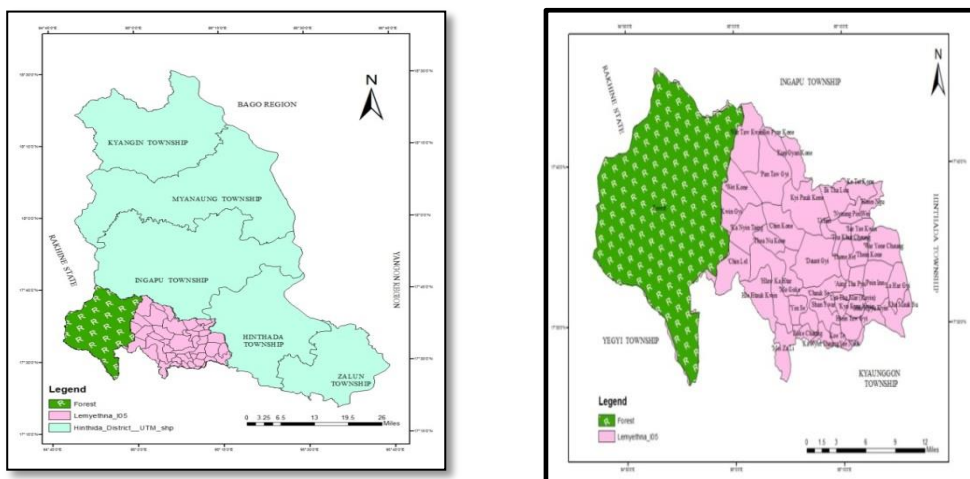


Figure (2). Location Map of Laymyethna Township. (Sources: Land Survey Department of Yangon)

**Relief and Drainage**

The western part of Laymyethna Township is composed of old rocks and the eastern part is covered with young sedimentary rocks. The western part of the township is the foot hill of Rakhine Yoma. Therefore, relief has gradually decreased from Rakhine Yoma to Ngawun River. These regions are divided into three parts. They are (i) Rakhine Yoma, (2) between Rakhine Yoma and Ngawun River and (3) eastern part of Ngawun River. The Nyawun River flows across the eastern part of Laymyethna Township and it is useful for navigation seasonally. It is the first distributary of the Ayeyarwady. The main Chaungs are Khattu and Yinlechaung.

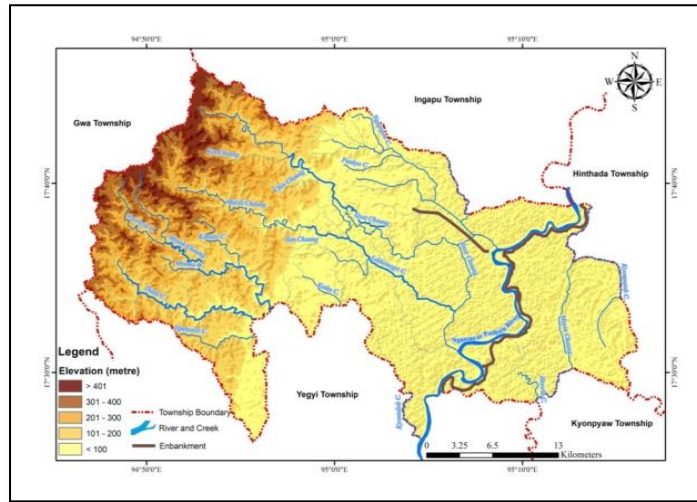


Figure. (3). Relief and Drainage of Laymyethna Township. (Sources: Land Survey Department of Yangon)

**Climate**

Temperature of Laymyethna may be similar to that of Hinthada because Laymyethna and Hinthada lie on the tropical zone. April is the hottest and January is the coldest month in this area. In April, temperature is 40. 4°C and 30. 8°C in January. Thus the range of temperature is 9. 6°C, annual rainfall of this region is 100. 75 inches and total rainy day is 111 in 2016. Therefore, according to the Koppen’s classification, this region experiences tropical monsoon (Am) of Climate.

Table (1). Climate Conditions of Laymyethna Township.

	J	F	M	A	M	J	Ju	A	S	O	N	D
<b>Rainfall (mm)</b>	12.97	3.05	0	0	263.6	609.8	648.2	473.95	254.7	228.7	68.2	0
<b>Maximun</b>	30.8	34.9	38.2	40.4	37.4	31.3	30.7	31.1	31.7	32.6	32	31.7
<b>Minimun</b>	11.6	14	19.5	22.3	23.9	24.4	24.5	24.4	24.2	23.8	21.6	18.8
<b>Mean</b>	21.2	24.45	28.85	31.35	30.65	27.85	27.6	27.75	27.95	28.2	26.8	25.3

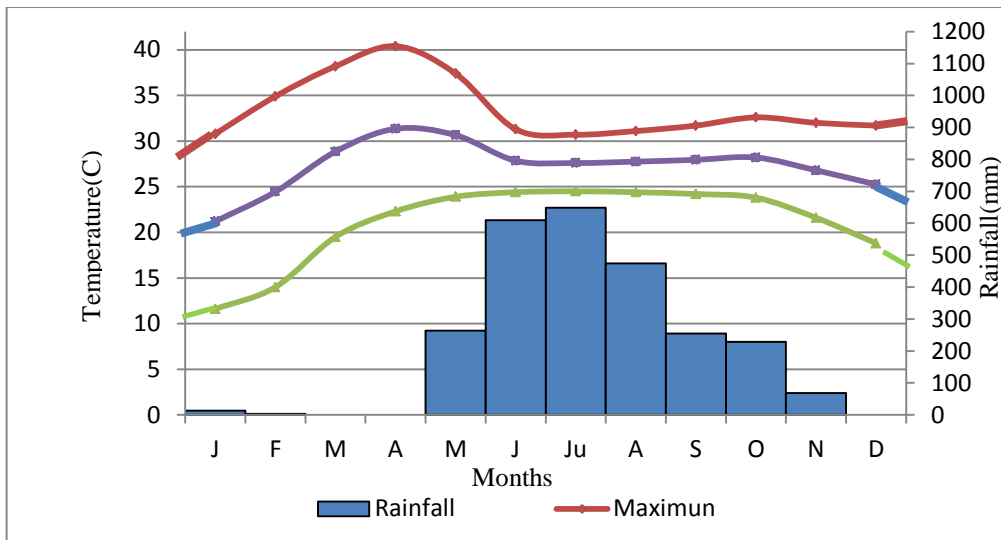


Figure 4. Climograph of Laymyethna Township (2016). (Source: Based on Table No 1. )

**Natural Vegetation and Soils**

Natural Vegetation is dense because of the proximity of Rakhine Yoma. There are 112,550 acres of reserved forest and 46830 acres of the forest. Therefore, they occupy 62. 43 percent of the total township area. These forests are found at the western part of the Township. Reserved forest is included in the type of tropical mixed deciduous forest (or) monsoon forest. In this region, swampy forest is found in flood plain of Ngawun River, and tropical mixed deciduous forest (or) monsoon forest can be found on Rakhine Yoma. The development of the soil depends upon parent material, climate, organic matter and relief. Soils of this township are as follows: (1) Yellow brown forest soil, (2) Meadow gley soil, (3) Meadow Swampy Soil and (4) Meadow alluvial inmaturred soil

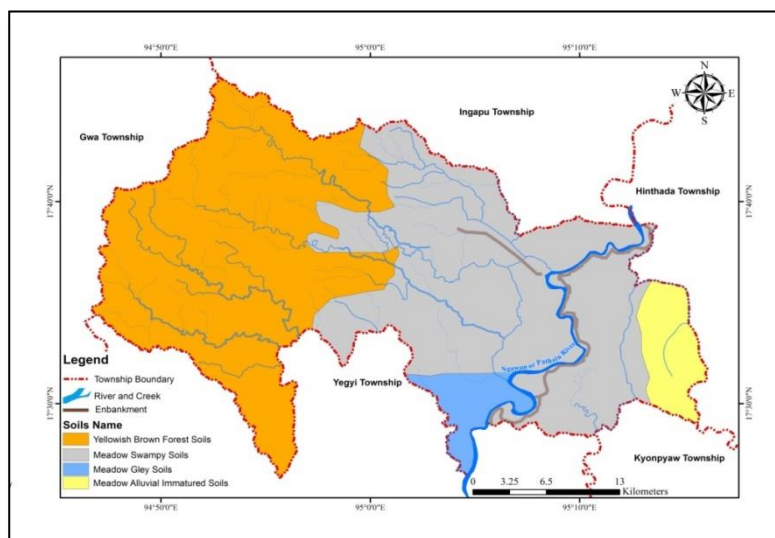


Figure (5). Soils of Laymyethna Township. (Sources: Land Survey Department of Yangon)

### TOTAL POPULATION AND GROWTH OF POPULATION

According to Census 2006, the total population of Laymyethna Township was 107243 persons. Population increased to 107790 persons in 2013. It resulted from better accessibility and higher production. In 2016, population slightly decreased to 107641 persons.

#### Population Distribution and Density

Five quarters and 41 village tracts are grouped into five categories to study population distribution of the area. There are 5 village tracts and 5 quarters with under 1000 persons, 13 village tracts between 1000 and 2000 persons, 10 village tracts between 2000 and 3000 persons, 7 village tracts between 3000 and 4000 persons, 6 village tracts over 4000 persons. These village tracts are located on both sides of the roads and transportation lines. In 2016, total population of Laymyethna Township is 107641 persons and population density is 269 persons per square mile.

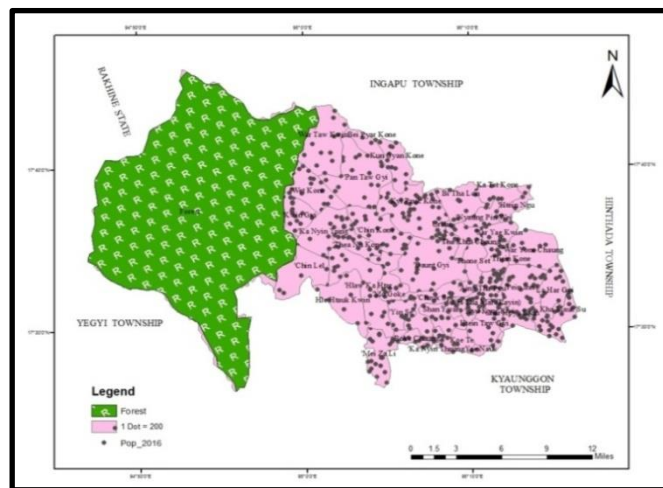


Figure (6). Population Distribution of Laymyethna Township (2016). (Source: Department of Labour, Immigration and Population, Laymyethna)

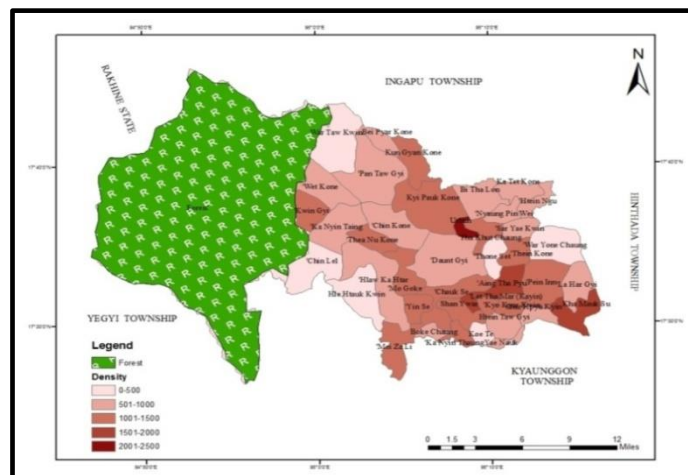


Figure (7). Population Density of Laymyethna Township (2016). (Source: Department of Labour, Immigration and Population, Laymyethna)

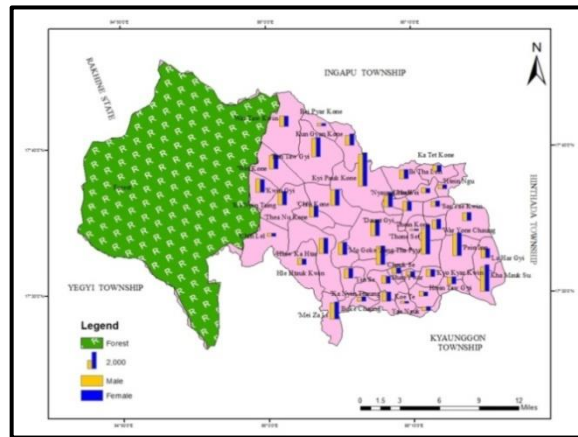


Figure (8). Male and Female of Rural Population in Laymyethna Township. (Source: Department of Labour, Immigration and Population, Laymyethna)

**Urban and Rural population**

In 2016, urban population was 3034 persons and rural population 104376 persons. Urban population was 2.82% and rural population about 96.96%. Under 18 of urban population in Laymyethna Township was 412 male and 455 female. Over 18 of urban population was 941 male and 1226 female. Under 18 of rural population was 18271 male and 17736 female. Over 18 of rural population was 32607 male and 35762 female. Gender ratio was 97.

Table (2). Male and Female of Urban Population in Laymyethna Township (2016) .(Sources: Administrative Department of Laymyethna Township,2016)

No	Wards	Male	Female	Total
1	No (1)Ward	211	264	475
2	No (2)Ward	193	254	447
3	No (3)Ward	315	380	695
4	No (4)Ward	336	387	723
5	No (5)Ward	298	396	694
	<b>Total</b>	<b>1353</b>	<b>1681</b>	<b>3034</b>

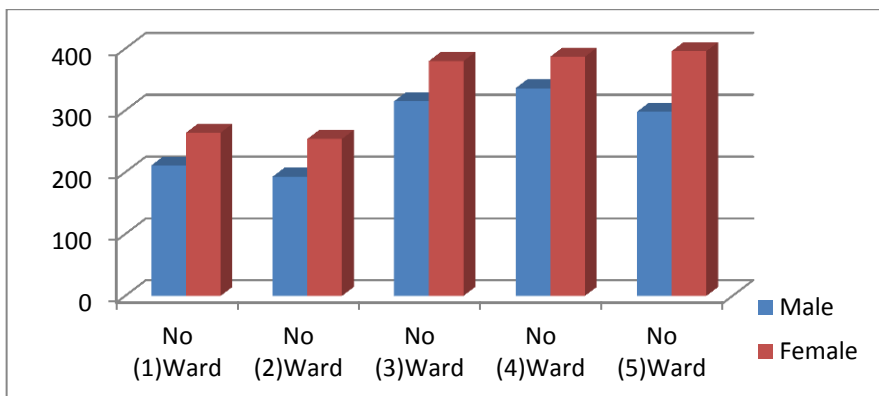


Figure (9). Male and Female of Urban Population in Laymyethna (2016). (Sources: Based on Table No. 2. )

## PRIMARY ECONOMIC ACTIVITIES OF STUDY AREA

Laymyethna Township has more rural population who are concerned with agricultural activities. The main economic activities of Laymyethna Township is agriculture.

### Types of Landuse in Agriculture

The main type of agriculture practiced in Laymyethna Township are (1) “Le” or Paddy agriculture (2) “Ya” Land (3) “Kaing” Land (4) “Garden” Land.

Table (3). Type of Agriculture Land in Laymyethna Township (2016). (Sources: Administrative Department of Laymyethna Township, 2016)

Sr. No	Types of Agriculture	Land area(acres)	Percent
1	Le	57407	49.89
2	Garden	31839	27.67
3	Kaing_Kyun	25647	22.29
4	Ya	170	0.15
	<b>Total</b>	<b>115063</b>	<b>100</b>

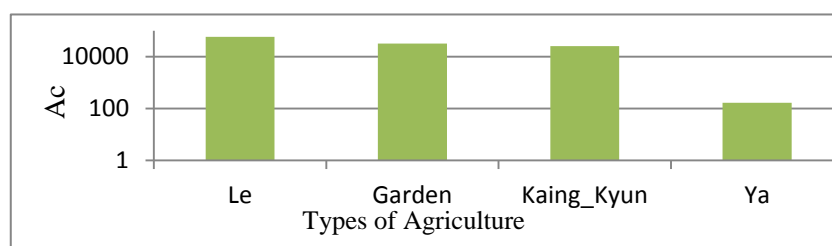


Figure (10). Types of Agriculture Land in Laymyethna Township (2016). (Source: Based on Table No 3)

### Distribution of Cultivated Area

In 2014-2015, distribution of cultivated area of paddy is 55251 acres, Maize and Corn is 18141 acres, Oil seed Crop is 11297 acres. Pulses are 75396 acres.

### Type of Cultivated Crops

Cereal crops grown in Laymyethna Township are monsoon paddy, summer paddy, maize and wheat. Monsoon paddy and corn cultivated area also increased in 2014-2015 due to higher price of crops. Cultivated area of summer paddy and wheat decreased in 2014-2015 due to unavailability of irrigation water and unsuitability of climate.

Table (4). Cultivation of Monsoon Paddy in Laymyethna Township (2009-2015), (Source: Settlement and Land Records Department)

Year	Sown area (acres)	Harvest area (acres)	Yield per (acres)	Production (baskets)
2009-2010	50429	50429	85.7	4321765
2010-2011	50723	50723	86.93	4409350
2011-2012	50339	50339	62.57	3120298
2012-2013	50791	50791	72.02	3657818
2013-2014	52775	52775	73.69	3889455
2014-2015	53337	53337	75.51	4027477



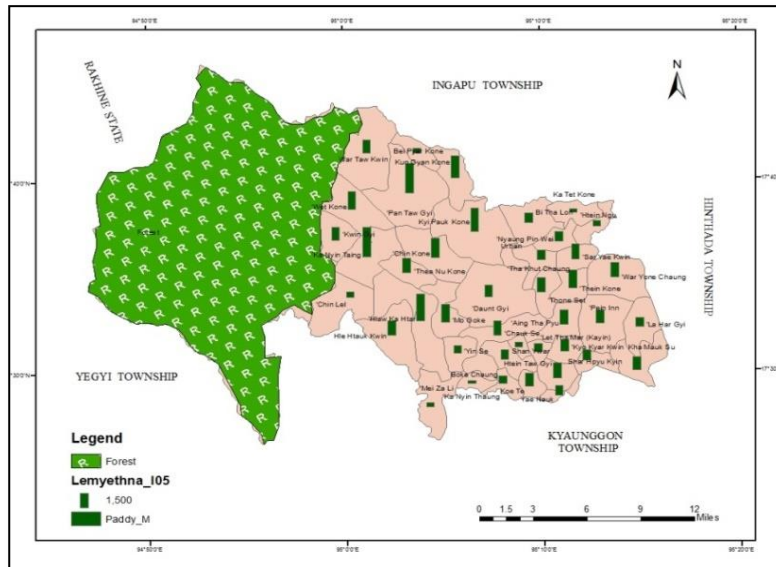


Figure (11). Cultivation of Monsoon Paddy in Laymyethna Township (2009-2015). (Source: Based on Table 4)

Table (5). Cultivation of Summer Paddy in Laymyethna Township (2009-2015), (Source: Settlement and Land Records Department)

Year	Sown area (acres)	Harvest area (acres)	Yield per (acres)	Production (baskets)
2009-2010	2971	1124	93.55	105150
2010-2011	2971	1124	95.03	106861
2011-2012	2045	53	78.43	4157
2012-2013	2004	120	83.12	9974
2013-2014	1914	125	101.46	12683
2014-2015	1914	191	101.23	19335

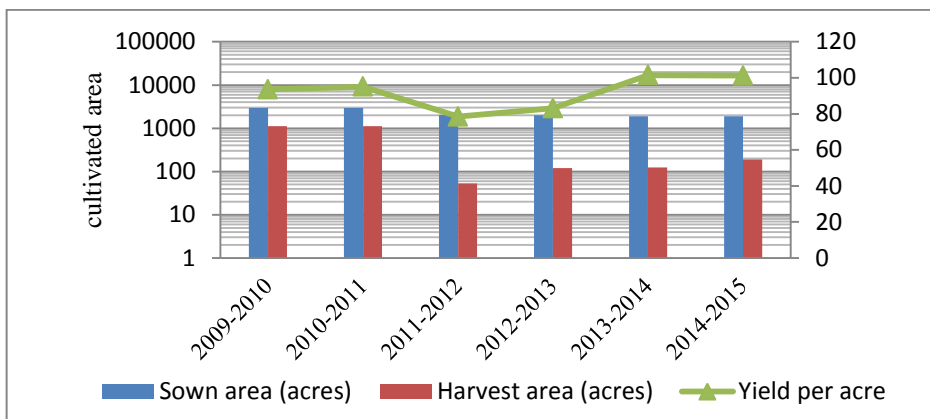


Figure (12). Cultivation of Summer Paddy in Laymyethna Township (2009-2015). (Source: Based on Table 5)

### Oil Seed Crops

The chief oil-seed crops grown in Laymyethna Township are groundnut, sesamum and sunflower. Sesamum is grown in pre-monsoon period with the help of irrigation water. The others are grown as a second crop on the paddy field after the harvest of paddy.



**Groundnut**

Groundnut is classified into monsoon and winter groundnut. Monsoon groundnut is for domestic consumption. Winter groundnut cultivated area is larger than monsoon groundnut cultivated area. In 2014-2015, total groundnut cultivated area was 5051 acres (44.7 per cent of total oil seed cultivated area) and production was 319451 baskets. The cultivated areas increased in 2014 -2015.

Table (6). Groundnut Cultivation in Laymyethna Township (2009-2015). (Source: Settlement and Land Records Department)

Year	Sown area (acre)	Harvest area (acre)	Yield per acre	Production (Baskets)
2009-2010	5012	5012	59.6	298889
2010-2011	5012	5012	60.3	302196
2011-2012	5015	5015	61.1	306187
2012-2013	5132	5132	59.5	305356
2013-2014	5142	5142	63.9	328442
2014-2015	5051	5051	63.2	319451

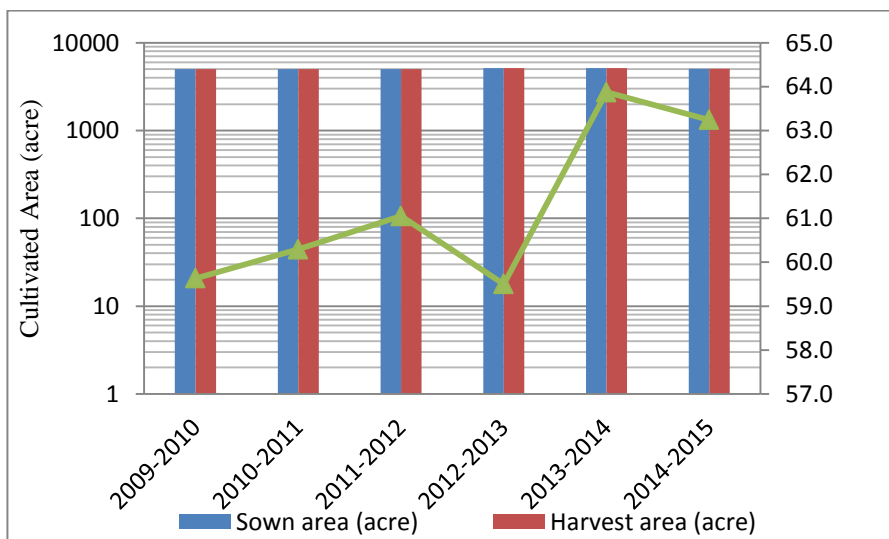


Figure (13). Groundnut Cultivation in Laymyethna Township (2009-2015). (Source:Based on Table 6)

**Pulses**

In Laymyethna Township, pulses are cultivated on “Le” land as double crops in cool dry period. The crops are mostly cultivated and sold out for extra income. The amount of local consumption is very small. Thus, it is an important cash-crop for the local farmers and existing climatic conditions are favorable for pulses cultivation In 2014-2015, cultivated area of pulses were 75396 acres and production was 1071188 baskets.

Table (7). Pulses Production in Laymyethna Township (2009-2015). (Source: Administrative Department of Laymyethna Township, 2016)

Pulses	2009-10	2010-11	2011-12	2012-13	2013-14	2014-15
Black Gram	51790	51997	52546	55740	52761	52571
Pedisein	940	943	943	950	980	10211
Bocate	5755	5757	5757	5760	5763	3148
Pelun	2112	2118	2118	2120	2122	1890
Pegyi	1812	1482	1482	1508	1506	1508
Satawpe	750	753	753	762	767	972
Soyabean	830	832	832	857	857	890
Kalape	358	358	220	361	362	362
Others	3665	3777	3779	3804	3842	3844

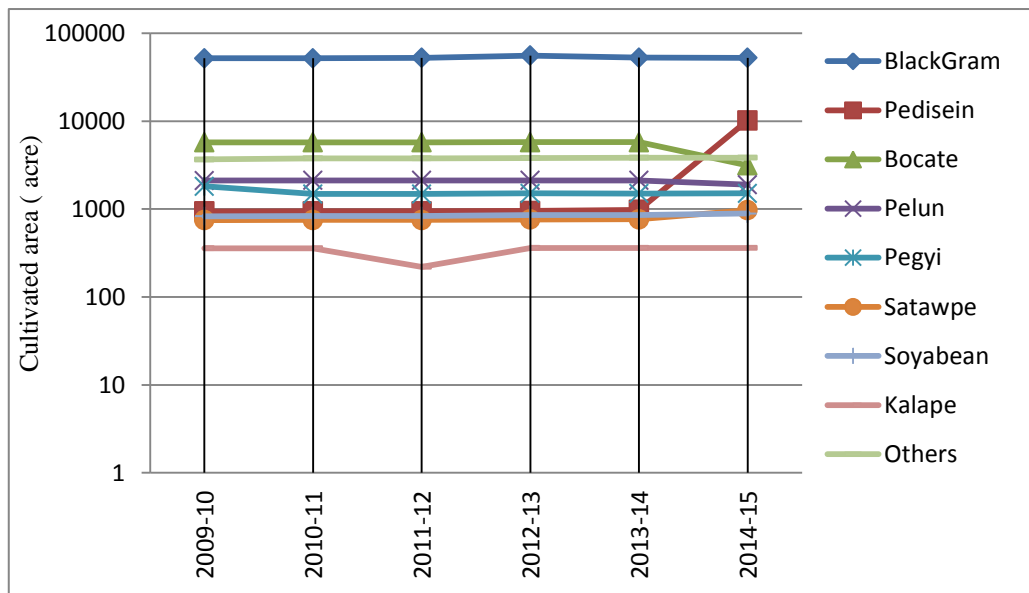


Figure (14). Pulses Production in Laymyethna Township (2009-2015) (Source: Based on Table. 7)

### Other Crops

Other crops in Laymyethna Township are Sugarcane, Chilli, Onion, Banana, Coconut, Betel Nut and Vegetables. Other crops such as coconut, banana, etc., are cultivated with the intention of getting home consumption. Some crops such as chilli and onion, sugarcane, betel nut, cassava, etc., are cultivated not only for home consumption but also for selling.

### Livestock

In this region, there is no specific and separate livestock breeding on commercial scale. Livestock raised in the township are oxen, buffalo, pig, goat, chicken, duck and horse. Oxen and buffalo are raised for cultivation only. Pig, chicken and duck are bred for domestic consumption. Goat is raised for milk and meat.

Table (8). Number of Animals in Laymyethna Township (2006-2016). (Source: Administrative Department of Laymyethna Township)

Year	Oxen	Buffalo	Pig	Goat	Chicken	Duck	Horse
2009-2010	21754	1472	9604	1746	226859	23173	15
2010-2011	21757	1476	9725	1752	227759	23373	15
2011-2012	21760	1481	9845	1756	228659	23573	13
2012-2013	22156	1496	11242	1875	234734	25329	10
2013-2014	22552	1516	12698	1996	252733	27279	9
2014-2015	22950	1536	14234	2122	26652	29329	9
2015-2016	23509	1590	16285	2320	282018	31560	9

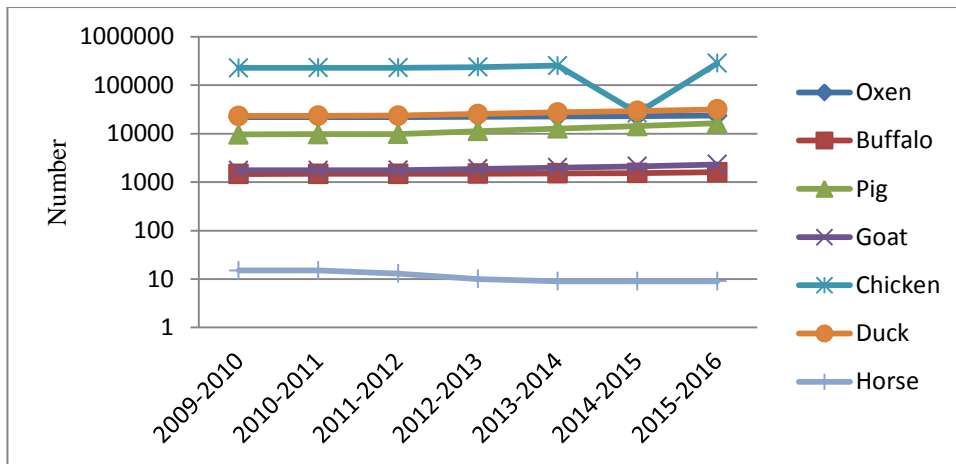


Figure (15). Number of Animals in Laymyethna Township (2009-2016). (Source: Based on Table 8)

**Fisheries**

In Laymyethna Township, fisheries are done for domestic consumption. Department of fishery is undertaking the supervision work over the issuing of inn grant and taxation of fishing operation. Fish water fishery of Laymyethna Township are classified into two types. They are (1) fish culture and (2) inn fishery.

Table (9). Production of Fishery in Laymyethna Township (2012-2017). (Source : Administrative Department of Laymyethna Township)

	Year	Fish Culture Production(Viss)	Inn Fishery Production(Viss)
1	2012-2013	38000	570000
2	2013-2014	400000	439000
3	2014-2015	374000	473000
4	2015-2016	362000	515000
5	2016-2017	417000	518000

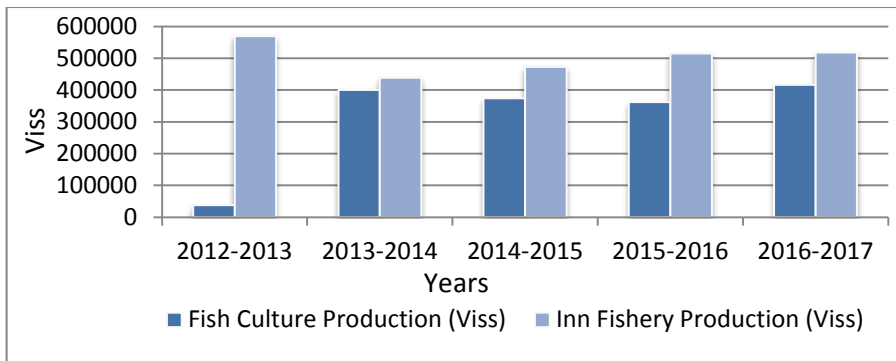


Figure (16). Fishery Products of Laymyethna Township (2012-2017). (Source: Based on Table 9)

**Forest**

Laymyethna Township has a reserved forest that lies at in the western part of the Laymyethna Township. The total reserved forest area covers 111771 acres (174. 64 square miles). In Laymyethna reserved forest, plantation of Pyinkado and teak are found. Other species are Kanyin, Kohko, Padauk, Banga, Myaukchaw, Thautkyaint, Ma-u and etc. Bamboo is also found in this forest. Varieties of bamboo are Kayinwa, Thaikwa, Tinwa, Kyetthaungwa, Htiyowa and Waboe.

**Rubber Plantation**

Rubber plantation is also found in the Laymyethna Township as rubber production has started since 2012-2013. Although the rubber is mainly cultivated in Southern Myanmar, rubber is also grown near the forest area of Laymyethna Township. At present, price of rubber is high and farmers are interested to cultivate rubber that can support economic conditions of local people.

Table (10). Rubber Production of Laymyethna Township (2012-2016). (Source: Forestry Department of Laymyethna Township (2016))

Year	Sown Area (Acre)	Harvest Area (Acre)	Yield Per Acre (Acre)	Production (Tons)
2012-2013	2606	45	164. 52	7403
2013-2014	2606	300	650. 00	195000
2014-2015	2993	305	657. 00	200385
2015-2016	3593	300	850. 00	252000

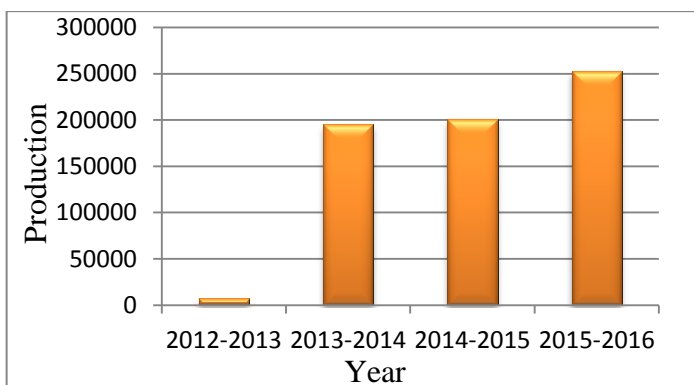


Figure (17). Rubber Production of Laymyethna Township (2012-2016). (Base on Table No.10)

## **SECONDARY ECONOMIC ACTIVITIES OF STUDY AREA**

### **Manufacturing of Study Area**

Manufacturing is an important part of the economy in Myanmar. But, in the study area, number of secondary economic activities is small due to the lack of modern industry in the rural areas. There are few industries in Laymyethna Township. There are 33 mills for grinding rice. Most are cottage industries. In the area, well known home industries are the traditional handicrafts. It includes pot working, bamboo hat working and mat weaving, which are important. These cottage industries are now being carried out of commercial scale. The products are sent to Yangon, Hinthada, Ngathaingchaung and other regions.

## **TERTIARY ECONOMIC ACTIVITIES OF STUDY AREA**

### **Services**

Tertiary economic activities of the study area are services. There are two golden shops, a phone mobile selling shop, two medicine shops, two electric goods shops in this region. Moreover, ten tea shops, five restaurants, sixty hardware shops, three clothing and weaving shops are found in the urban areas, Two banks generated in the Laymyethna Township Myanmar Economic Bank and Agricultural Development Bank. All of these are located in the urban area.

## **TRANSPORTATION AND COMMUNICATION**

Laymyethna Township is served by transportation and communication. Today transportation and communication are essential for social and economic development. Transportation made people and goods flow from here to there. There are three types of transportation: Waterways, Road and Railway.

### ***Waterways***

Because of having Ngawun River, township's major transportation is water way. Ngawun River is navigable seasonally. Small boats ply along Gyat, Khatta and Lekhongyichaungs seasonally. In the rainy season, water way is important along the Ngawun River from Laymyethna to Ngathynegyaung.

### ***Road***

The kinds of road in this township are metalled and earthen roads.

### **Pathein-Monywa Highway**

This road was constructed in 1972. It connects Pathein, Laymyethna Township and Monywa, running in the north-south direction. Length of this road in this region is 11 miles in length and it is 100 feet wide.

### **Laymyethna-Ithabyu-Ngathynegyaung Road**

It is 9 miles 1 furlong long and 30 feet wide, running from north-south direction. This road is an earthen road and it can only be used in summer.

### **Laymyethna-Taloadhtaw-Hinthada Road**

It is 21 miles 6 furlong long. It is metaled road and useful throughout the year. The existing roads are poor in condition and these are used with less maintenance. Some roads are only used in summer and so it is difficult to carry agriculture goods to other townships in the Ayeyarwady Region,

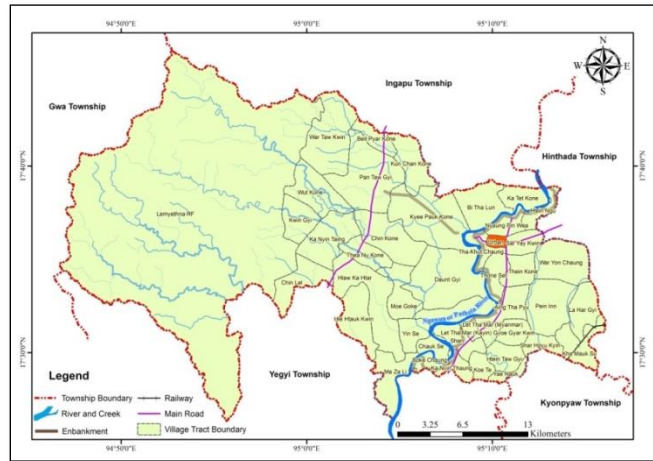


Figure (18). Transportation of Laymyethna Township. (Source: Land Survey Department of Yangon)

### ***Railway***

Railway was introduced in Laymyethna by connecting Kyangin with Pathein. Pathein-Hinthada-Kyangin railroad passes through the Laymyethna Township at Kamauksu station (Plate 1). It is located at the southernmost part of this township. Railway plays a crucial role in carrying people and goods from one place to another in Ayeyarwady Region.



Plate (1). Khamauksu Railway Station and Rail Road of Laymyethna Township. (Source: Field Surveying and Observation, (7. 2. 2017))

### **Communication**

The expanding economy of the area requires efficient means of communication from one part of the township to another area. Through the number of telephone connection increased in the area. Transport, communication and electronic media have been important for improving socio economic conditions of the township within Hinthada District.

### **Trade**

Major economic activity of Laymyethna is agriculture. Therefore, the main local trade of Laymyethna Township is concerned with agricultural products and three major markets namely Laymyethna Market, Ithabyu Market, and Kamauksu Bazaar. The principle exports are rice, pulses, black gram, bamboo hats, mats, plastic baskets, fruits, vegetables etc. The

import items are textiles, construction and electrical goods, farming implements, fertilizer, pharmaceuticals and other various of items that mostly carried from Yangon, Hinthada, Pathein, Ngathynegyaung, Pyay and other regions. The products of Laymyethna Township are also sent to Yangon, Rakhine State, Pyay and other regions.

### **FINDINGS AND SUGGESTIONS**

Most of the population of Laymyethna Township is engaged in agriculture so that it is related to agricultural activities especially crop cultivation.

According to 2016 data, the total population was 107641 persons and density was 269 persons per square mile. Rural population density was 2467 per square mile. Urban population density was 465 per square mile. Most populated area is found on both Laymyethna-Ithabyu-Ngathynegyaung Road and Laymyethna-Taloadhtaw-Hinthada Road. Social conditions are important for the development in this area. Rural population is 104376 persons (97.18 per cent) more than urban population is 3034 persons (2.82 per cent).

Type of land use Agriculture are Le, Garden, Kaing-Kyun and Ya. Most of them, Le land are largest in area with 57407 acres (49.89 per cent). Paddy, wheat, maize, pulses, and oil seeds are cultivated in this township. Oil seeds cultivated within township are sunflower, groundnut, and sesamum. Sugarcane, chilli, onion, coconut, banana, betel nut, cassava and vegetables.

Forest area of Laymyethna Township is 111769.2 acres or 452.32 square kilometer (174.64 per square mile). In Laymyethna reserved forest, there are Pyinkado, teak and rubbers. Bamboo is also found in this forest.

Livestock breeding and animal husbandry are practiced in this township. Fisheries industries especially fish culture and inn fisher are found in Laymyethna Township.

Transportation is important for the development of this area. There are three types of transportation. Roads are Pathein-Monywa Highway, Laymyethna-Ithabyu-Ngathynegyaung Road, and Laymyethna-Taloadhtaw-Hinthada Road connecting village tract to village tract and village to village. Rail way is Pathein-Hinthada-Kyangin railroad which passes through the Laymyethna Township at Khamauksu Village Tract. Waterway is navigable for local people seasonally by small boats. In the rainy seasons, along the Ngawun River from Laymyethna to Ngathynegyaung is navigable.

Major goods produced from the area include rice and rice products, mats, bamboo hats, sunflower, groundnut, vegetables etc. The main imported items are transport equipment, oil, clothing and apparel, chemical fertilizer, electronic equipment, house apparatus etc.

Physical conditions are very important because Ngawun River passes through the township from northeast to south direction. River erosion and deposition frequently occur in this region. So erosion deters any kind of development.

Economic and social conditions are related directly and indirectly. Economic growth will upgrade social conditions of the area. Existing physical conditions support economic condition especially agricultural activities. Existing infrastructure are fairly good in condition but it is necessary to upgrade the existing road infrastructures for the purpose of getting economic development.

Agriculture is the major pillar of the economy in Laymyethna Township. Therefore, it is needed to develop the agricultural activities. Thus agriculture implement, loan, input are necessary to increase production of crops.



## CONCLUSION

Laymyethna Township is located north latitudes 17° 24' and 17° 46' east longitudes 94° 47' and 95° 17'. It is bounded by five Townships and area is 255388 acres (or) 399.04 square miles. May be comprises of five wards and forties one village tracts.

Physically the township is composed of western mountain ranges and Ngawun River and the plain in the east. The western mountain ranges is the eastern part of Rakhine Yoma which is 250 to 3000 feet high and the rest are low about 30 feet above sea level. The region receives to tropical monsoon (Am) type of climate. The average annual rainfall is about 100.75 inches and the temperature remains round about 40. 4°C. The western Rakhine Yoma gets Tropical monsoon forest due to the moderate temperature and 100.75 inches of rainfall.

Socially, the total population was 107641 persons in 2016, with the population density of 269 per square mile. Thus, Laymyethna Township is moderately inhabited township. In the township, the number of the rural population is more than the urban population.

Economically,. Paddy, wheat, maize are cultivated as major cereal crops in this township. Pulses include matpe, bocate, pelun, pegyi, sartawpe, pedisein, soya bean, kalape and other pulses. Oil seed crops cultivated within the township are sunflower, groundnut and sesamum. Other crops are sugarcane, chilli, onion, coconut, banana, betel nut, cassava, and vegetables.

Road network is more systematic than the former period and the development gap is found between urban and rural . It is necessary to reduce the gap in the near future. The waterway transport network provides the socio-economic development of people from village tracts along the Ngawun River. The development of motor road network affects socio-economic development of people from village tracts along the motor road. The development of rail road network affect the socio-economic condition of people living along the rail road in the near future. Because of the improved construction of rail roads and motor roads, socio-economic condition of the area will be improved in the near future.

Finally, Laymyethna Township, is an accessible area that has many motor roads, and waterways. Therefore, it is necessary to develop the socio-economic condition and living standard of people in Laymyethna Township through the upgrading transportation in the near future.

### Acknowledgements

I would like to express my gratitude to Dr Tin Htwe, Rector, Hinthada University and Dr Theingi Shwe, Pro-Rector, Hinthada University and members of Research Committee of Hinthada University for their permission to submit the research paper. Special thanks also go to my Professor and Head of Geography Department Dr Kyi Kyi Mya and Professor Dr Myint Thida for their support and encouragement.

### References

- Htwe Soe, (2000). Socio-Economic Study of Nyaunglaybin Township, (Unpublished), M. A thesis, Department of Geography, University of Yangon.
- Kay Thi Moe, (1998). Socio - Economic Geography of Wakema Township, (Unpublished), M. A Thesis, Department of Geography, University of Yangon.
- Naing Oo, (2006). The Socio-Economic Geography of Laymyethna Township, (Unpublished), M. A Thesis, Department of Geography, University of Hinthada.
- Ni Ni Soe Maw, (2000). Analytical Study of the Socio-Economic of Danuphyu Township, (Unpublished), M. A Thesis, Department of Geography, University of Yangon.